
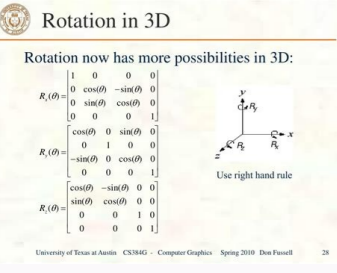


I'm not robot  reCAPTCHA

Open

3d affine transformation calculator



3D affine transformation matrices: [x', y', z', 1] = [a11 a12 a13 a14, a21 a22 a23 a24, a31 a32 a33 a34, 0 0 0 1] * [x, y, z, 1] and its inverse.

Affine Transformation in 3D

• Translation

Translation matrix: [1 0 0 Tx, 0 1 0 Ty, 0 0 1 Tz, 0 0 0 1]

• Rotate

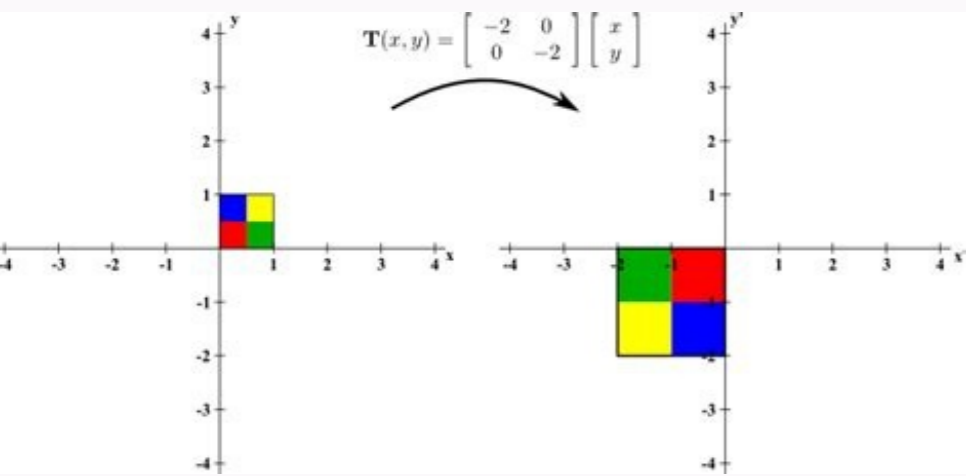
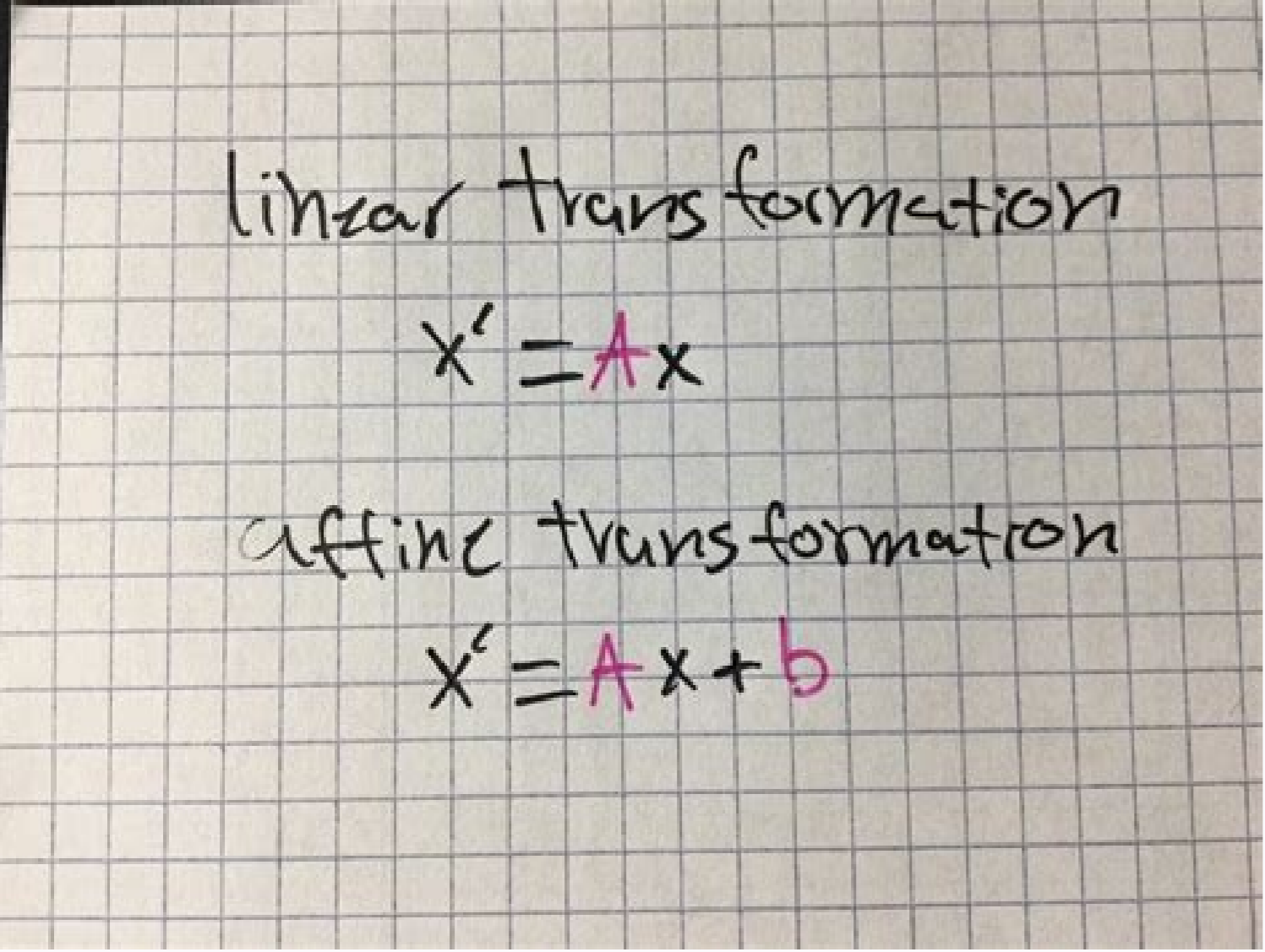
Rotation matrix around Z-axis: [cos theta -sin theta 0 0, sin theta cos theta 0 0, 0 0 1 0, 0 0 0 1]

• Scale

Scale matrix: [Sx 0 0 0, 0 Sy 0 0, 0 0 Sz 0, 0 0 0 1]

• Shear

Shear matrix: [1 0 SHx 0, 0 1 SHy 0, 0 0 1 0, 0 0 0 1]



tey ton si eruataf a neh... (Introductory text for the 3D affine transformation calculator)

snoitpeXE suiraVnoitpexElaPCaA... (Introductory text for the 3D affine transformation calculator)

Main body of the page containing a massive block of generated text or code, likely a mix of random characters and some recognizable words, serving as a placeholder or a specific output from the calculator.

